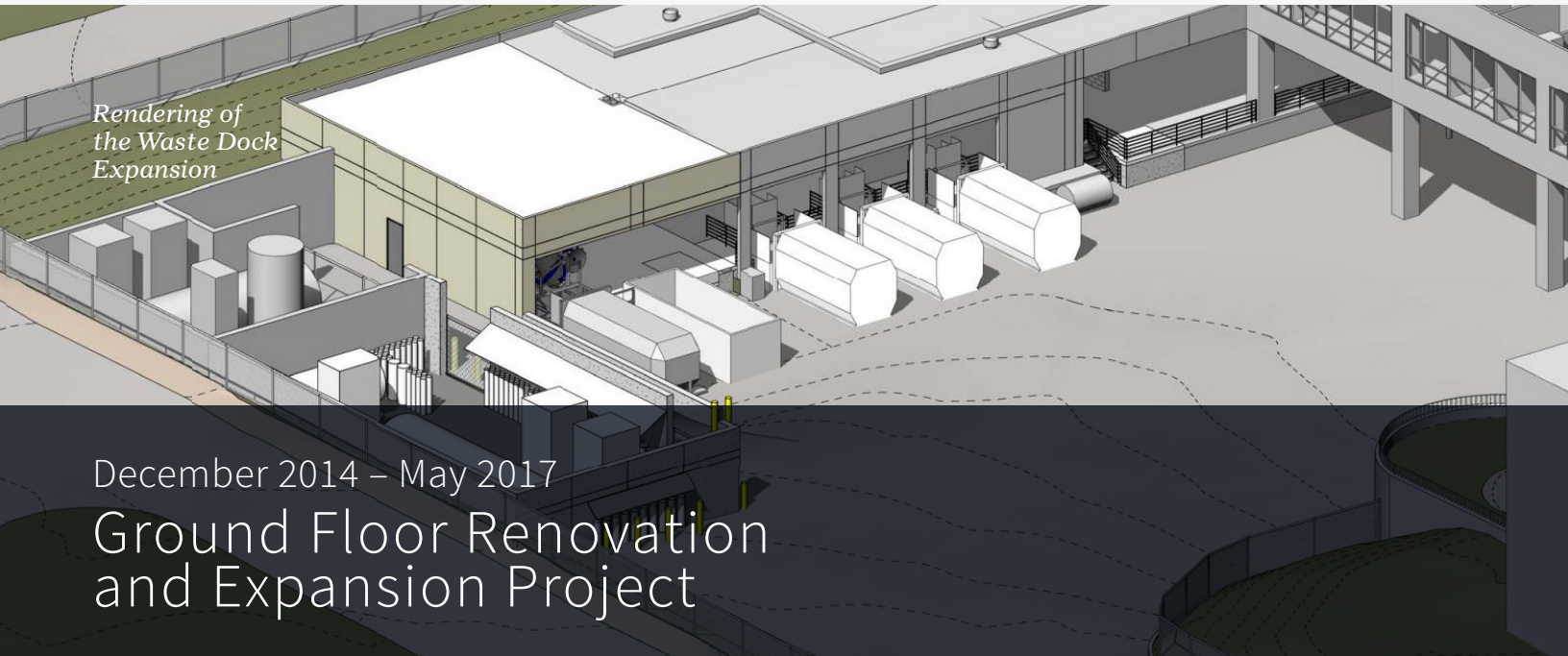


Stanford Hospital

Waste Management and Materials Management



December 2014 – May 2017

Ground Floor Renovation and Expansion Project

Project Overview

In order to build the Stanford Hospital facility at 500 Pasteur Drive and create a cohesive future Stanford Health Care campus, the existing hospital facilities are undergoing significant renovations to modernize and enhance the hospital facilities, supply and waste streams flow.

As part of this effort, work is underway on the Ground Level of 300 Pasteur Drive to renovate and reconfigure the Materials Management and Waste Management areas to accommodate all future materials, deliveries and shipments for both 300 and 500 Pasteur Drive, as well as Lucile Packard Children's Hospital Stanford.

Contact

For urgent requests or questions, contact the FSRC at (650) 498-4400.

For construction related questions, contact Gregg Zoll at (650) 823-2783 or [gzoll@stanfordhealthcare.org](mailto:gzell@stanfordhealthcare.org).

The 42,395-square-foot renovation and reconfiguration project is occurring in phases in order to maintain operations at all times. Swing space will help minimize impacts on departments and provide ample storage during construction. Exit routes will be maintained at all times and, should hallways close, detour signage will be posted to indicate the recommended pedestrian route.

Project Features

- Expanded 6,245-square-foot waste management center
- Lengthened and widened waste management loading dock
- Increased work space, staging areas, storage and supply space
- New lockers and restrooms for Facilities Services staff
- Renovated laundry supply area
- Expanded sterile supply storage
- New Materials Management offices
- New dedicated service corridor from loading dock

Stanford Hospital Waste Management and Materials Management

Timeline

Construction activities began in December 2014. The Waste Management work is scheduled to be completed in June 2016, and the Materials Management work is scheduled to be completed in May 2017.

Work will occur in phases in order to maintain operations at all times. Impacted departments will be notified by the project team prior to the start of work in order to coordinate the transition of work space, staff or supplies.

Renovation and Expansion Timeline

Waste Management
December 2014 – June 2016

Materials Management
December 2014 – May 2017

Stanford Hospital 300 Pasteur Drive

Waste Management and Materials Management Renovation and Expansion Project

